



adler®

## AT5 EVSE Fuse



### FEATURES:

- 500 VDC EVSE fuse
- Rated Current: 60-400 A
- Rated Breaking Capacity: 20 kA
- Dimensions: 30x50, 38x50 mm
- General purpose fuse for EV charging equipment
- Ref. to UL 248-13
- Approvals: UL(File: E485737)
- Recommended fuse holder: BFR071-35-M8,  
BFR084-48-M10

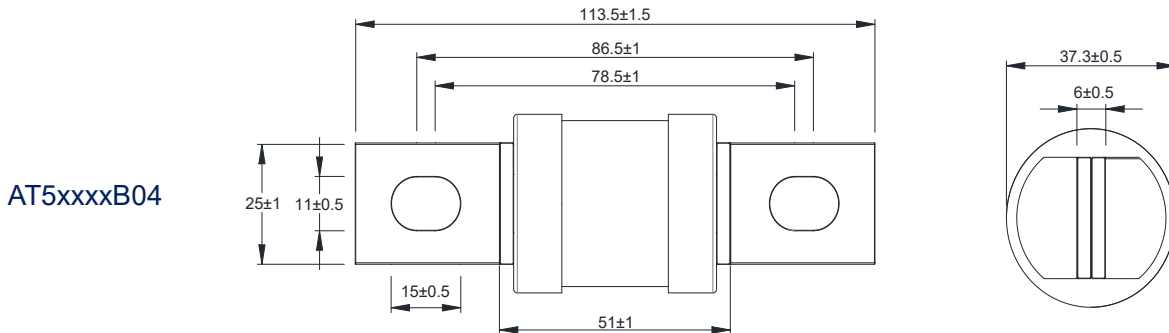
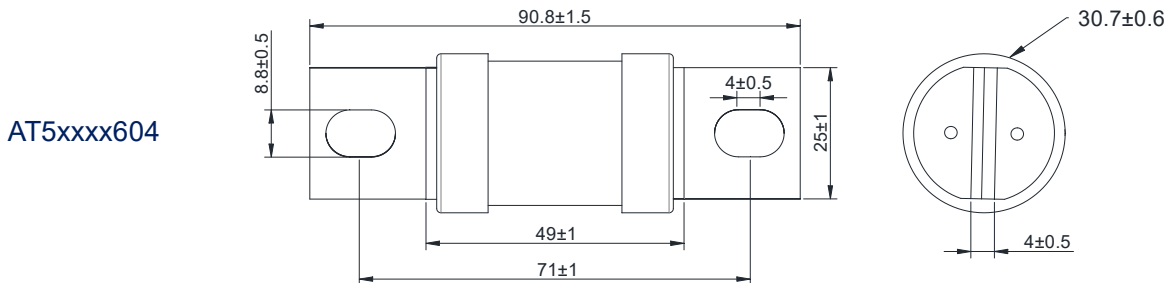
### ELECTRICAL SPECIFICATIONS

Part Number	Rated Current	Ampere Code	Rated Voltage	Breaking Capacity	Dimensions and Bolt Size
AT52600604	60A	2600	500 VDC	20 kA@500 VDC	30x50 mm Bolt Size: M8
AT52700604	70A	2700			
AT52800604	80A	2800			
AT52900604	90A	2900			
AT53100604	100A	3100			
AT53125604	125A	3125			
AT53150604	150A	3150			
AT53175604	175A	3175			
AT53200604	200A	3200			
AT53225604	225A	3225			
AT53250604	250A	3250			
AT53300604	300A	3300	500 VDC	10 kA@500 VDC	38x50 mm Bolt Size: M10
AT53200B04	200A	3200	500 VDC	20 kA@500 VDC	
AT53250B04	250A	3250			
AT53300B04	300A	3300			
AT53350B04	350A	3350			
AT53400B04	400A	3400			

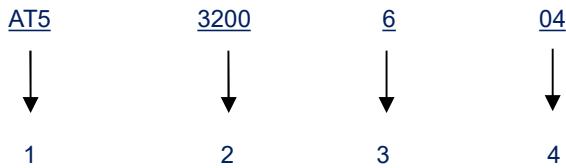
### Note:

- (1) Percentage of change in fuse current carrying capability. Change in ambient temperature: -0.13 %/°C
- (2) Temperature Rise: <45K at 50 % of rated current

**DIMENSIONS (mm)**

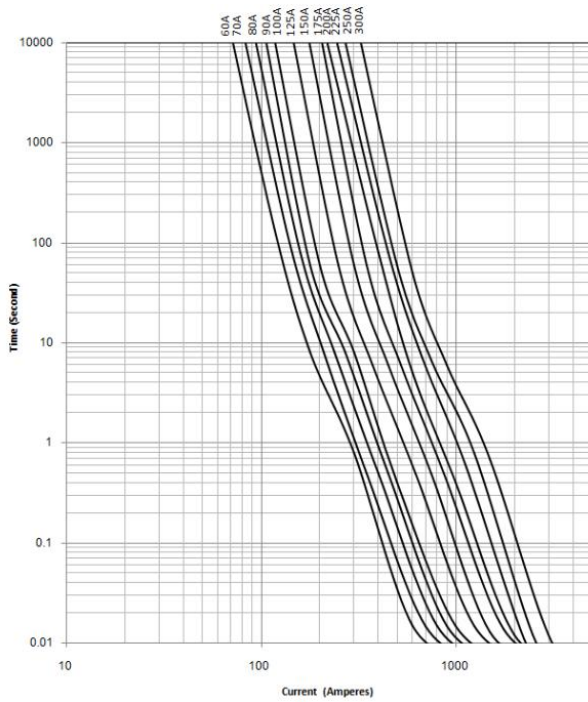


**PART NUMBER SYSTEM**



- |   |                                |   |
|---|--------------------------------|---|
| 1 | .....Product Series .....      | AT5   |
| 2 | ..... Ampere Code .....        | 200 A (see ampere code column of electrical specifications) |
| 3 | ..... Size .....               | 6 - 30x50mm, B - 38x50mm                                    |
| 4 | ..... Supplementary Code ..... | 04: default   |

**TIME CURRENT CURVE  
AT5xxxx604**



**TIME CURRENT CURVE  
AT5xxxxB04**

